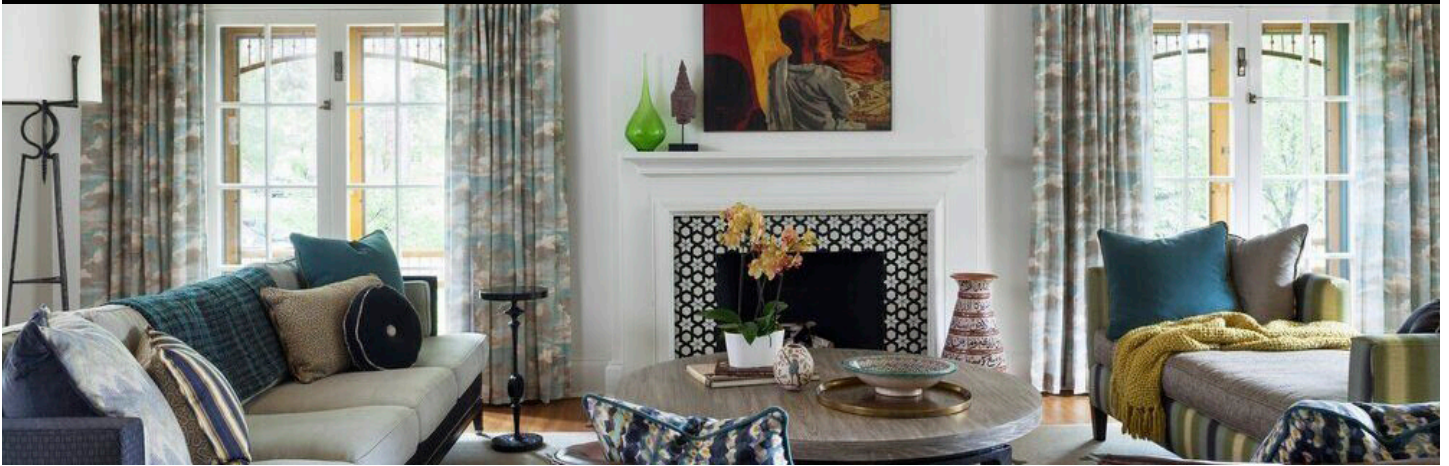


RECHERCHE

interior design

Let's Get Started



Welcome to Recherché Interior Design where you will receive exclusive, curated, and custom design for your project. This website explains the general design process, showcases project examples, and describes the different types of billing found throughout the project cycle.

Every customer's needs and project are unique so we are providing a general overview to help with your understanding and expectations. Recherché looks forward to working with you and hopes that you gain additional insight into the Recherché Interior Design experience from beginning to project completion – **Let's Get Started!**

Adding Value



Adding Value To Your Project

The evolution of your home is an investment. Recherché has 25 years of expertise to help you make the best decisions regarding aesthetics, quality, and budget. With education, years of project experience, the best resources for builders, installers, exclusive products and an innate artistic eye for great design, Recherché will thoughtfully guide you through the design process to fruition for the best outcome.

Individualized Projects (Your Project Is Unique)

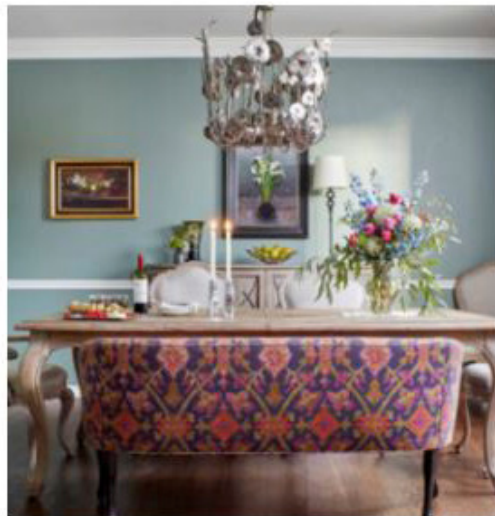
Know that communication and respect are paramount. Your style, scope and budget are personally yours, which means that your project will be run with specifics that are unique to you. Via Recherché's portfolio (www.rechercheid.com/portfolio) you will notice how different each project is, reflecting the style of every individual homeowner. Budgets vacillate per project and Recherché can help you understand the parameters of your project specifically.

Adding Value (Continued)

Recherché In The Press



Home & Garden Colorado
 Recherché on the Cover!



5280 Home Jun/Jul 2020
 Check Us Out on the Newsstands!



5280 Home Oct/Nov 2018
 Bold & Bright Cover & Article

The Design Process



Initial Consultation

Through a preliminary meeting Recherche will address the following:

Face to Face Interaction is Paramount

This is a personal relationship. Do we resonate with mutual respect? It is important that you feel educated and listened to regarding the design parameters.

Project Requirements

Seeing the space in person and through joint analysis helps in understanding the work to be undertaken.

Conveying Ideas

Through visual representation we communicate as a team what your preferred aesthetic is and how that could be represented in the physical design of your space. This is a “streaming process” where concepts are initially conceived of to be later developed.

Scope

How do you personally live? What do you want to spend on your project and what is the timeline?

The Design Process (Continued)

Agreement & Retainer

Moving Forward

To commence design work a signed agreement that pertains to your project and a monetary retainer are required.

Development of Design

Space Assessment

Initial measurement of space to create technical drawings of your existing space. These drawings will be used as a base to define the space and input plans for your future design, be it a kitchen cabinet layout, plumbing designation, lighting and electrical plans, material layout or a furniture space plan.

Continuation of Technical Drawings

Drawings are used to convey work to be done to the contractor/team and to have visual understanding of what the project will look like. These drawings consist of to-scale plans, up-right elevations, and possible 3-D renderings of an entire space.

Product Selection

All the elements that will create the visual beauty of your project will be selected and samples will be procured for your approval and contractor understanding. These products could include but are not limited to flooring, cabinets, plumbing, tile/grout, counters, lighting, hardware, color/paint/finish, furniture, textiles, carpets, trim, art, and accessories.

Meetings and Preparation for Meetings

It is preferred to meet bi-weekly for fluidity. Each meeting will take a minimum of 1.5 hours and could last up to 5 hours. Meetings may include the following:

1. Review plans and show initial finishes for space. Depending on the scope of the project this phase could take 3-5 separate meetings.
2. Select lighting, plumbing and appliances at showroom. 1-2 meetings.

The Design Process (Continued)

3. Refine selections and price via vendors.
4. Review design elements and gain client approval.
5. Contractor Book/Installation Guidelines. Communication is prepared to convey all the details to the design team including drawings, technical data, product specifications / installations, finish selections and application.
6. Vetting of contractor for proposed work. 1-3 meetings.
7. Procurement of specialty installers such as wallpaper installers, faux finishers, welders, upholsterers, window treatment fabricators and carpenters to name a few.
8. Preparation of proposals for ordering of product with client's approval and payment. Follow-up payment for freight, receiving and delivery comes after delivery of goods.
9. Order of product by designer.
10. Actualize project and product installation. This is a lengthy process. Typically, the hire contractor takes charge at this juncture with consistent communication with the design and project owner.
11. Project management and follow up with team with onsite design assessment. Depending on scope of work 2 – 7 meetings with and without client.
12. Project administration by tracking of product, reconnaissance of damaged goods with claims and scheduled deliveries.
13. Meetings with team/client to assess work and finish application.
14. Installation of furniture and soft goods such as window treatments, rugs, accessories, and art.



The Design Process (Continued)

Purchasing

Designer Exclusive Vendors

Recherché has multitudes of designer exclusive vendors to customize your selections with pricing and materials that are not available to the public. Due to the individual nature of this type of purchasing the designer compiles the specifics of your selections, organizing them in a fluid purchasing stream with presented proposals, purchase ordering, tracking of product, receiving and delivery.

Organization, Communication, & Clarity

Purchasing organized and handled by Recherché retains organization, communication with installers, up to date back order availability, clarity in customization, damage control and filing of claims, common place receiving/storage and professional delivery.

Additional Resources

Retail chains are also utilized for desired items and can be ordered by the homeowner or Recherché.

Project Management & Expert Coordination

Contractor and vendor communication that convey the design details is paramount. Written documentation follow up of product orders/arrivals, installation details, real life application of product and problem solving are all part of moving your project forward. Recherché is your personal advocate ensuring that the design intention comes to fruition and according to plan.

Furniture Installation

Whether you are solely furnishing your home or remodeling/finishing, the furniture installation requires expertise. Utilizing professional receiver/delivery personnel, Recherché works in tandem to perfectly coordinate and arrange every new and original piece within your space. Rugs are placed, furniture is placed, and every piece is adjusted to purposefully actualize the final stages of your complete design.

The Design Process (Continued)

Project Completion

Don't forget the art and accessories. Be it personal treasures and photographs or pieces curated by Recherché, every item is placed to achieve its optimal harmony and balance. Recherché utilizes local galleries, creating art collections that personally reflect you, represent true artists and different genres, adding that special touch that will truly take your home to the next level. Utilizing professionals your personal gallery will be placed with care and precision. Your needs will be unique to you and your history.

Project Examples

Furnishing/Finishing a Room

Think of a space from top to bottom and all the layers that go into making a room beautiful. Flooring, paint, rugs, furniture both soft and hard, window treatments, lighting, art, and accessories. Floor plans are utilized to understand the parameters and how the space will be used. Flow, intimacy, and function are all considered. Bulk selections are made, meeting the required needs while considering comfort and visual dynamics. Finishes such as fabrics, wood stain, paint and lighting are all important details that accentuate each other. Various sources are utilized to meet your personal needs aesthetically and monetarily.



Project Examples (Continued)

Furnishing/Finishing a Room



Project Examples (Continued)

Kitchen/Bath Remodel

Any remodel will add complexity especially when plumbing and appliances are involved. Recherche will help you evaluate your personal budget and trajectory. Having the right team that includes the designers, builders and vendors is key. The logistics will dictate much of the budget and direction of your project.



Project Examples (Continued)

Kitchen/Bath Remodel



Project Examples (Continued)

Entire Home

Cohesion throughout a home adds serenity. This is achieved through thoughtfulness and purpose. Typically, a home evolves depending on its architecture, how it is used and an individual's personal nature. Recherché will assess your home in accordance with you, maximizing what you have and purposefully taking you to a higher aesthetic level within your means.



Project Examples (Continued)

Entire Home



Project Examples (Continued)

Remodel

Anything structural will require Architectural support. A complete team of experts is always the best approach, letting each entity perform their best work. If your remodel only requires finish application Recherche is ready to go, guiding you in the most appropriate selections and then coordinating all the details for purchase and installation.

Before



After



Project Examples - Remodel (Continued)

Before



After

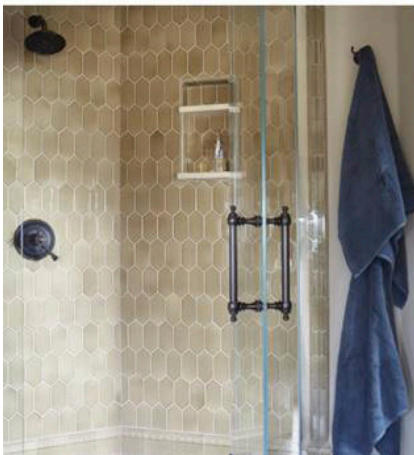
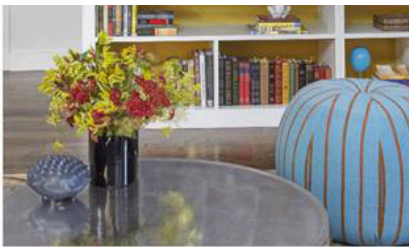
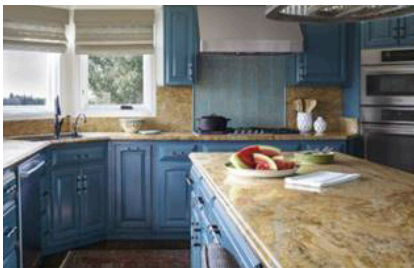


Project Examples - Remodel (Continued)

Before



After

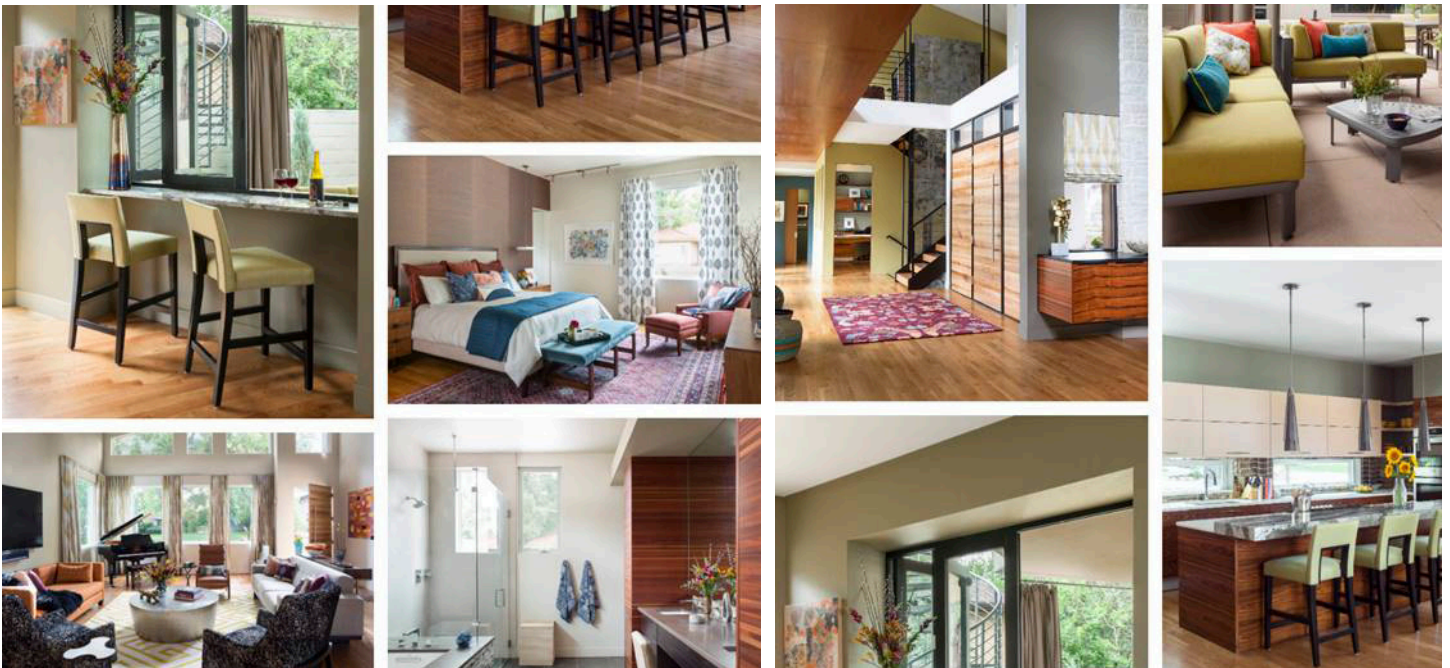


Project Examples - Remodel (Continued)

Before



After

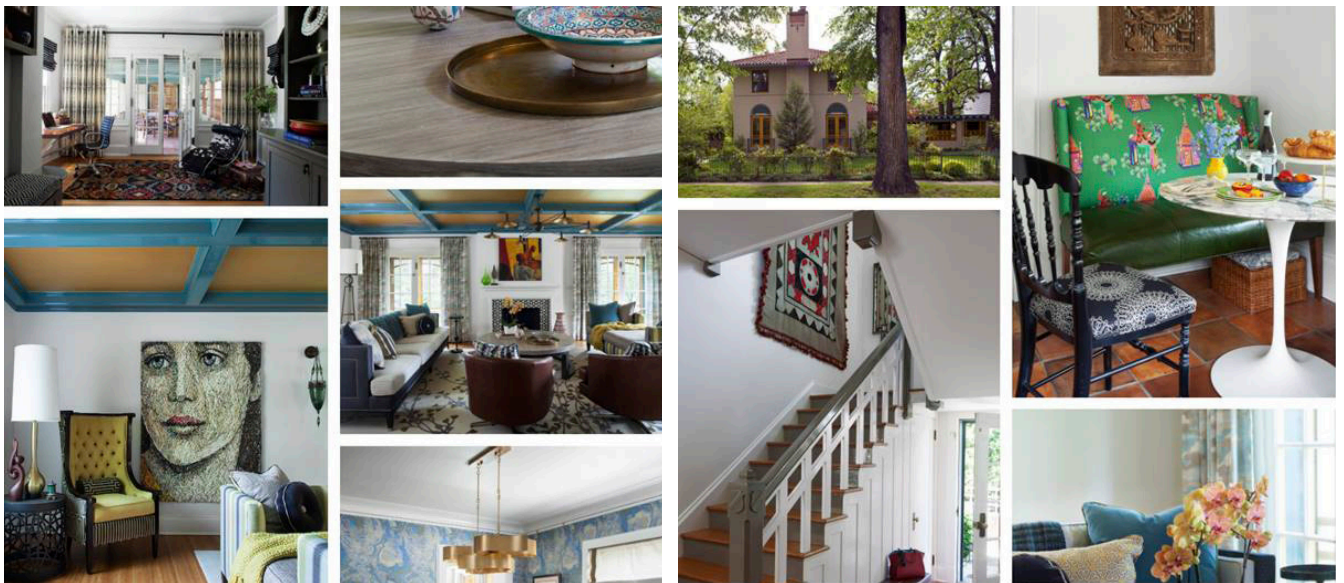


Project Examples - Remodel (Continued)

Before



After



Al La Carte Services



General Consultation

A general consultation is necessary before starting any project. If you aren't sure that Recherche is the right fit, this is a great way to start out and learn more about how Recherche can help with your design. Consultations are primarily done face to face and utilize time billing. They typically range from 1-7 hours depending upon the project scope and complexity.

Paint Consultation

Pick the perfect paint color for your space. Recherche has taken into consideration client requests and paint consults are frequently asked for. A paint consult is done on location to better understand the surrounding space and light. This service can range from 1-7 hours and utilizes time billing.

Art Procurement

Recherche Interior Design collaborates with various local galleries and artists in search of obtaining one of a kind artwork to enhance and increase the character of your space. Artwork is thoughtfully selected with you in mind and staged in your home for your review and final selection.

Accessorizing

Accessorizing is one of the final touches provided on any project and it can also be completed as a stand-alone service. Accessories help complement a space and Recherche will help select items that enrich and provide personality to your one of a kind space.

Billing



Overview

Most projects utilize time, product, and receiver billing throughout the different design stages. Please browse through the Billing tabs to learn more about where each type typically occurs. Recherché will provide open and timely communication throughout the process to establish clear expectations.

Time Billing

Time billing is based on the agreed upon Recherché hourly rate discussed in the initial consultation. Any time spent working on tasks that are directly related to your project is considered billable time.

- The majority of billable time will be found in the initial consultation, development and design, and project completion stages.
- Time billing can be accrued during project management and furniture installation to make sure everything's on track.
- Recherche strives to maintain high levels of communication in regards to budget, estimates and billable hours.



Billing (Continued)

Product Billing

Recherché provides a high level of craftsmanship from quality materials to custom furniture design. Product billing includes any products and services rendered by Recherche to complete the project outside of Recherché billable hours. Examples of product billing might include:

- Flooring
- Paint/Wall Treatment
- Furnishings (sofa, chairs, cocktail table, side tables, ottomans/benches, bookcases, lighting/lamps, window treatments, rugs, art, and accessories)

Receiver Billing

Receiver billing can often be found in expert coordination, furniture installation, and sometimes during project completion where the finishing touches are added. Receiver billing includes the following types of charges and Recherché will explain them up front so you have a good understanding a head of time:

- Freight charges for the transportation of goods from the manufacturer to a receiver.
- The receiver is an integral part of furnishing your project, as items are inspected for quality and then held until ready to place.
- Delivery charges are added when the receiving warehouse takes your product to the final destination.
- Installation charges are a combination of delivery and placement once all construction and interior design changes have been made.

Contact

Erika Rundiks



At your service.

What is the origin of RECHERCHÉ? sought out, rare, exotic, obscure, elegant, comes straight from French recherché, the past participle of the verb rechercher "to look for carefully, research."

Thank You

Thank you for taking the time to review how the design process works and the value that Recherché Interior Design will bring to your unique project.

Please email erika@rechercheid.com or call Erika Rundiks directly at **720-839-0321** to get started with your project or if you have additional questions.

You can also visit the official website at www.rechercheid.com.